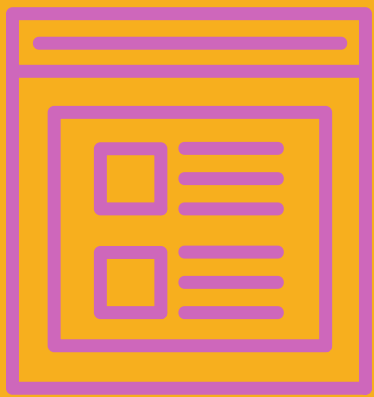


4 STRATEGIES FOR REDUCING 30-DAY READMISSIONS

As CMS levies additional penalties for excessive readmission rates, hospitals across the country are developing strategies for ensuring patients don't return to the hospital.

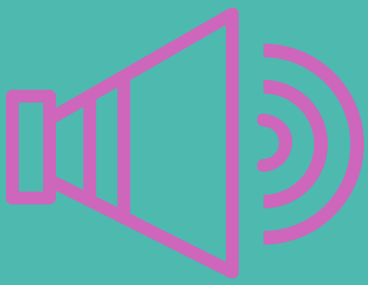


CARE COORDINATION

Effective care coordination leads to better care transitions and higher levels of patient compliance.

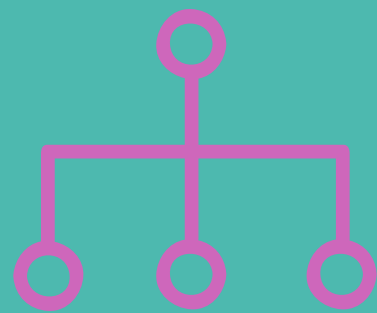
ENHANCE WORKFLOWS

When staff members have more time to focus on their patients, there is a greater opportunity to effectively teach patients about their care post-discharge.



BETTER DISCHARGE INSTRUCTIONS

Leveraging the teach back method or recorded discharge instructions leads to better health literacy and outcomes.



POST DISCHARGE COMMUNICATION

Simply asking a patient about their recovery once they leave the hospital has proven to identify patients most at risk for an adverse event.

